

# AP3850C

THE RICOH AFICIO AP3850C

THE RICOH

# color printer series



Aficio®

RICOH®



Ricoh and **EFI**® have partnered to combine their expertise in high-speed printing and print controller technology.

**THE RESULT:** *Uncompromising document production for the workgroup with extensive job and color management tools.*

## Introducing the Ricoh Aficio AP3850C

**Integrating high-speed printing with a print controller optimized for performance.**

The new Ricoh Aficio AP3850C color laser printer combines Ricoh's high-speed printing technology with EFI's Fiery Print Controller. Imagine, color prints at an amazing 28 ppm and black & white documents at 38 ppm, this level of productivity is unaffected even when printing duplex! With true 1,200 x 1,200 dpi resolution and an embedded EFI Fiery Print Controller, the AP3850C prints vibrant color images with detail, giving you the ability to create spectacular color presentations, impressive sales literature, exciting newsletters, and more.

For AP3850C users, the waiting game is over. It features First Print Out times of less than 12 seconds for color and 9 seconds for black & white, along with RIP-While-Print® capability to maximize throughput on sequential jobs.

Being "Fiery Driven™" means that the AP3850C incorporates robust color management tools, extensive job management utilities and, options such as EFI Command WorkStation™ and EFI Velocity™ workflow software that deliver outstanding value.

Finally, it's more than just printing speed that sets the AP3850C apart from the competition. Document finishing—collating, stapling and even punching put the AP3850C in its own product class. Speed, ease-of-use, and complete document finishing all add up to one answer: The Ricoh AP3850C!

**AP3850C**  
(#400805)



**AP3850C D**  
(#400806)



**AP3850C DT2**  
(#400808)

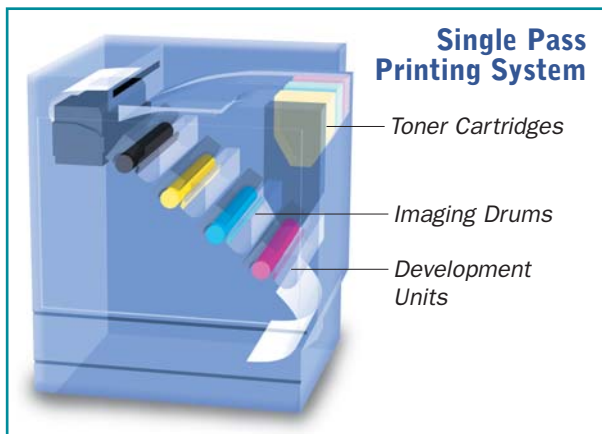


<b>Paper Input</b>	500-sheet x 2 trays	500-sheet x 2 trays	500-sheet x 4 trays
<b>Duplex</b>	Option (#400774)	Standard	Standard
<b>RAM</b>	128MB	128MB	128MB
<b>HDD</b>	10 GB Standard	10 GB Standard	10 GB Standard
<b>Paper Handling Options</b>	<ul style="list-style-type: none"> <li>· Either 500 x 1, 500 x 2 or 2,000 input tray</li> <li>· Duplex</li> <li>· Finisher or 4-bin mailbox</li> </ul>	<ul style="list-style-type: none"> <li>· Either 500 x 1, 500 x 2 or 2,000 input tray</li> <li>· Finisher or 4-bin mailbox</li> </ul>	<ul style="list-style-type: none"> <li>· Finisher or 4-bin mailbox</li> </ul>

## Exceeding the Performance Standard

The AP3850C sets a new standard in printing performance for the office for both color and black & white document production... all at a low cost of ownership.

- At 38 ppm in black & white and 28 ppm in color, with on-line finishing options, there is no competition that can deliver a comparable level of document productivity at the same price. The AP3850C uses a tandem drum printing system that images each color successively in a single pass, enabling the AP3850C to maximize printing output.
- Automatic duplex printing or document finishing has no impact on throughput; the AP3850C maintains its full rated speed in both color and black & white.
- The AP3850C doesn't even slow down when the documents are finished on-line with the optional SR770 Finisher. Collating, stapling, and punching (optional) are performed effortlessly.
- With a 700 MHz CPU, even the most complex graphics are processed in minimal time, while the Fiery driven RIP-While-Print and continuous print technologies optimize the workflow to drive the AP3850C at its rated speed.



## Quality Color Imaging Without The High Cost

Now not only can you create your documents internally, but produce them with a professional look as well.

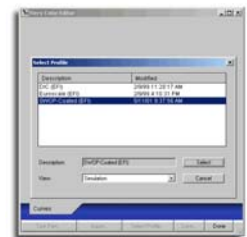
- Eliminate costly and time-consuming outsourcing for your color printing needs. Take control of the entire creative and production process.
- With a maximum resolution of 1,200 x 1,200 dpi, everything from text to graphics to photos print with vivid color and exceptional detail.
- Greater color control is available through Fiery ColorWise Pro Tools™, which enables you to fine-tune the color output to match the application requirements.



EFI Colorwise Pro Tools (main window)



Fiery Profile Manager



Color Editor

# THE RICOH AFICIO AP3850C

## Convenience Through Paper Handling and Finishing

Any printing speed advantages of a printer can be lost without ample paper supply and document finishing. Replenishing paper or assembling and stapling documents together disrupts production and requires manually interaction. With the AP3850C, productivity is based on document throughput—not just printed pages.

- The standard AP3850C comes with a capacity of 1,100 sheets, which can be easily increased to 3,100 sheets through five trays, reducing production interruptions for paper loading.
- Choice of either a 4-bin Mailbox or a 2,500-sheet document finisher makes it easy to separate documents for immediate distribution.
- The AP3850C prints on a range of media and paper types, which include 90 lb. index, OHP transparencies, and labels, in sizes up to 12 x 18 inches.

## EFI Fiery Driven® Means More Than Speed

EFI® is the leading developer of print controllers for color imaging applications. The Fiery® Print Controller is not only optimized for performance, it encompasses a range of tools and utilities that provide color control, job management, and seamless networking.

- EFI Fiery ColorWise® provides the ability to fine tune the color output to simulate different offset press standards like SWOP, Euroscale, or DIC. Color consistency and predictability can't be any easier than with Fiery ColorWise.
- Optional EFI Command WorkStation (CWS) is a simple-to-use job management tool that helps you manage one or more AP3850Cs on a network. Not only can you monitor the printing activity, you can prioritize the printing queue and resend jobs for printing without re-RIPing.



Command WorkStation (main window)



Command WorkStation (security)

- Remote job management is available with EFI Fiery WebTools™, which can be accessed through any standard Java-enabled Web-browser. Similar to Command WorkStation, Fiery WebTools enables you to manage, monitor, and manipulate the print job queue on the AP3850C.
- Network connectivity could not be simpler than with EFI Fiery NetWise™, which supports all popular network environments. The AP3850C automatically switches between all standard protocols and transfer speeds, including TCP/IP, IPX/SPX, and AppleTalk, as well as major network ports and topologies such as 10/100 BaseTX connections.
- The optional EFI Velocity workflow software enables you to coordinate the printing capacity of multiple networked AP3850Cs. A request for multiple copies of a single document can be printed through two or more AP3850C printers. Thus, two AP3850Cs have the virtual printing capacity of 56 ppm in color and 76 ppm in black & white.



**The AP3850C is based on proven technologies: Ricoh's high-speed tandem drum imaging technology and EFI's Fiery Print Controller. The result is a document production system optimized for performance and color quality. There is no longer any reason not to have color in-house. The Ricoh Aficio AP3850C makes it all possible.**



# Get the Output You Need from Your Choice of Accessories and Configurations



# THE RICOH AFICIO AP3850C

## General Specifications

<b>Configuration:</b>	Desktop
<b>Technology:</b>	Laser beam scanning, electro-photographic printing and dual toner development
<b>Resolution:</b>	True 1,200 x 1,200 dpi, 600 x 600 dpi
<b>Printing Speed:</b>	38 ppm (black & white), 28 ppm (full color) @ 600 x 600dpi; 28ppm (black & white), 14 ppm (full color) @ 1200 x 1200dpi Thick Paper / Transparencies: 10ppm (black & white/full color) Duplex 38 ipm in color, 28 ipm in black & white Stapling/Punching: Same as the simplex printing speed
<b>First Print Speed:</b>	Less than 12 seconds full color; less than 9 seconds black & white
<b>Input Capacity:</b>	Bypass Tray: 100-sheet 2 x 500 sheets Up to 3,100 sheet total capacity
<b>Output Capacity:</b>	Standard: 500 sheets, plus 100-sheet Face-up output tray Optional 4-Bin Mailbox: 125 sheets x 4 bins Optional Finisher: 2,500 sheets
<b>Paper Sizes:</b>	Standard Trays: 8 1/2" x 11", 8 1/2" x 14", 11" x 17", 7 1/4" x 10 1/2", 8" x 13", 8 1/2" x 13", 8 1/4" x 13", A5, A4, A3 Bypass tray: Width 4.0" to 12.0"; Length 5.8" to 18.0"
<b>Paper Weight:</b>	Trays: 16 lb. to 28 lb. Bond Bypass tray: 16 lb. Bond to 90 lb. Index
<b>Paper Types:</b>	Plain paper, Laser-printer qualified transparencies, card stock, and labels—Bypass tray and Face-Up output tray only
<b>Duplex Printing:</b>	Optional with AP3850C
<b>Power Consumption:</b>	1.550W or less Energy Saver Mode: 45W or less
<b>Warm-up Time:</b>	Less than 190 seconds
<b>Dimensions (W x D x H):</b>	AP3850C: 22.7" x 26.7" x 28.2"; AP3850C D: 26.2" x 26.7" x 34.3"; AP3850C DT2: 26.2" x 26.7" x 38.2"
<b>Weight:</b>	AP3850C: 180 lbs.; AP3850C D: 198 lbs.; AP3850C DT2: 253 lbs.

## EFI® Fiery Print Controller Specifications

<b>CPU:</b>	Intel Pentium III 700 MHz
<b>Printer Languages:</b>	PCL5c emulation, Adobe PostScript 3
<b>Fonts:</b>	For PS: 136 Adobe Type 1 fonts For PCL: 35 Intellifonts, 10 TrueType fonts, 1 bitmap font
<b>Memory:</b>	128 MB RAM; expansion up to 256 MB
<b>Interface:</b>	10/100 Base TX Ethernet (RJ45 port) IEEE1284 Parallel Type C
<b>Network Protocols:</b>	Simultaneous auto-sensing and auto-switching protocols: TCP/IP, IPX/SPX, AppleTalk, SMB, LPD/LPR
<b>Driver:</b>	PCL5c: Windows 95/98/Me/NT 4.0/2000/XP PS: Windows 95/98/Me/NT 4.0/2000/XP, Mac 8.6 or later
<b>Hard Disk Drive:</b>	10 GB
<b>Print Job Management Utility:</b>	Fiery WebTools™ (includes Fiery WebDownloader™) SmartNetMonitor Ver. 5.xx
<b>Color Management:</b>	ColorWise Pro Tools™ (includes Fiery Print Calibrator™) ICM profile, ICC profile download PANTONE, and CMYK controls Densitometer compatible
<b>Other Printing Features:</b>	Secure Print Check & Print

## Controller Options

<b>Memory Options:</b>	PC100 compliant SDRAM (maximum of 256 MB total) 64 MB (Part #001339MIU), 128 MB (Part #001340MIU)
------------------------	--

## Paper Handling Options

### Paper Tray Type 3800C 500 sheets x 1 tray (Part # 400775)

<b>Paper Size:</b>	Same as standard trays
<b>Paper Weight:</b>	Same as standard trays
<b>Paper Capacity:</b>	500 sheets Note: 500 x 1, 500 x 2, and LCT cannot be simultaneously installed.

### Paper Tray Type 3800C 500 sheets x 2 trays (Part # 400776)

<b>Paper Size:</b>	Same as standard trays
<b>Paper Weight:</b>	Same as standard trays
<b>Paper Capacity:</b>	1,000 sheets Note: Standard with AP3850C DT2

### Large Capacity Tray Type PS470 (Part # 400777)

<b>Paper Size:</b>	8 1/2" x 11"
<b>Paper Weight:</b>	Same as standard trays
<b>Paper Capacity:</b>	2,000 sheets

### Duplex Unit Type 3800C (Part # 400774)

<b>Paper Size:</b>	Up to 11" x 17"
<b>Paper Weight:</b>	16 to 28 lb. bond Note: Standard with AP3850C D and DT2.

### SR770 Finisher (Part # 400542)

<b>Stack Capacity:</b>	Lower Staple Tray: 2,000 sheets (8 1/2" x 11", 20 lb.) or 750 sheets (11" x 17", 20 lb.) Upper tray: 500 sheets (8 1/2" x 11", 20 lb.) or 250 sheets (11" x 17", 20 lb.)
<b>Staple Capacity:</b>	50 sheets (8 1/2" x 11", 20 lb.) or 30 sheets (11" x 17", 20 lb.)
<b>Staple Paper Size:</b>	8 1/2" x 11", 8 1/2" x 14", 11" x 17", A3, A4
<b>Staple Paper Weight:</b>	17 to 23 lb. bond Note: Cannot be simultaneously installed with 4-Bin Mailbox. Requires installation of Duplex Unit and additional paper input options

### Punch Kit Type 1045 (Part # 410785)

<b>Number of Holes:</b>	Two or Three
<b>Paper Size:</b>	8 1/2" x 11", 11" x 17", A3, A4
<b>Paper Weight:</b>	16 to 28 lb. bond

### 4-bin Mailbox (Part # 400546)

<b>Stack Capacity:</b>	125 sheets per bin
<b>Paper Size:</b>	Same as standard trays
<b>Paper Weight:</b>	16 to 28 lb. bond Note: Cannot be simultaneously installed with SR770 Finisher.

## Software Options

EFI Command WorkStation™

## Supplies (Yields are based upon 5% toner coverage on letter size page)

Black Toner (Part # 888030) @ Approx. 20,000 pgs	Color Development Units (Part # 400595)
Cyan Toner (Part # 888037) @ Approx. 10,000 pgs	Waste Toner Bottle (Part # 400662)
Magenta Toner (Part # 888036) @ Approx. 10,000 pgs	Fusing Unit (Part # 400596)
Yellow Toner (Part # 888035) @ Approx. 10,000 pgs	Fuser Oil Cartridge (Part # 400549)
Black Image Drum (Part # 400548)	Staple Set Cartridge (Part # 410801) @ 5,000 shots
Color Image Drums (Part # 400594)	Staple Refills (Part # 410802) @ 5,000 x 3 shots
Black Development Unit (Part # 400661)	

Velocity™

PANTONE®

fiery driven

Electronics  
FOR Imaging™



OFFICIAL PRINTER,  
GOVERN AND FAX  
OF THE PCA OF AMERICA



EPA 2000 Office Products Partner of the Year (5th consecutive year)  
EPA 2000 Labeling Partner of the Year  
Ricoh Corporation has determined that this product meets the Energy Star® guidelines for energy efficiency.

Windows® and Windows® 3.1/95/98/Me/NT4.0/2000/XP are registered trademarks of Microsoft Corporation. Macintosh®, Mac OS and AppleTalk® are registered trademarks of Apple Computer, Inc. Adobe® and PostScript® are trademarks of Adobe Systems, Inc. PCL is a registered trademark of Hewlett-Packard Company. Ricoh® and Aficio® are registered trademarks of Ricoh Company, Ltd. All other trademarks are the property of their respective owners.

**RICOH®**  
Image Communication

Ricoh Corporation, Five Dedrick Place, West Caldwell, NJ 07006  
Phone: (973) 882-2000 • Website: <http://www.ricoh-usa.com>